

# SAVE THE DATE!

1 September 2022



World CLL Day



**C**hronic  
**L**ymphocytic  
**L**eukemia

#WCLLD22 #getonboard #withteamCLL

**SAVE  
THE  
DATE!**

**1 September  
2022**

**#WCLLD22**

**C**hronic  
**L**ymphocytic  
**L**eukemia

**World CLL Day**



**#getonboard #withteamCLL**

As CLL patients  
navigate a world  
learning to live with  
COVID-19, we need  
you to consider us  
more than ever.

**GET ON  
BOARD**

**#WCLLD22**

**C**hronic  
**L**ymphocytic  
**L**eukemia

**WITH THE WHOLE  
COMMUNITY!**



**#getonboard #withteamCLL**

# GET ON BOARD!

Please consider the  
immune-compromised!  
They need our support  
more than ever.

**C**hronic  
**L**ymphocytic  
**L**eukemia



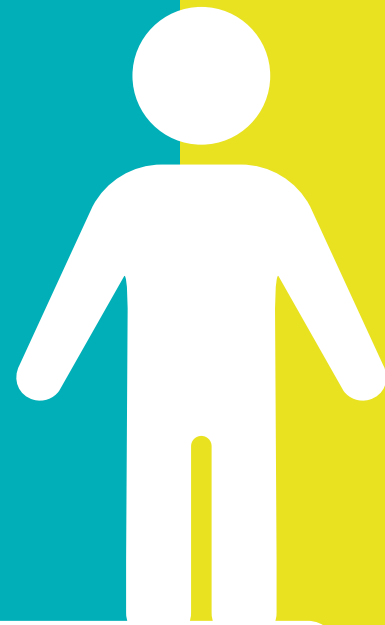
#WCLLD22

#getonboard #withteamCLL

As CLL patients we're navigating a world learning to live with COVID-19. Make sure we're not left behind!

# HELP US GET ON BOARD

WITH THE WHOLE  
COMMUNITY



#WCLLD22

#getonboard #withteamCLL

**C**hronic  
**L**ymphocytic  
**L**eukemia

# Giving HOPE



**C**hronic  
**L**ymphocytic  
**L**eukemia

CLL patients  
need access  
to treatments  
and therapies  
to navigate in a  
world living with  
COVID-19.

#WCLLD22

#getonboard #withteamCLL

# Giving HOPE

A stylized illustration of a person in a dark blue silhouette standing on a white cloud. They are holding a large, colorful umbrella with segments of red, orange, pink, and yellow. The background is a solid teal color with white clouds at the top and bottom.

**C**hronic  
**L**ymphocytic  
**L**eukemia

For each CLL patient, every year gained against the disease means a related, complementary amount of hope.

#WCLLD22

#getonboard #withteamCLL

# CLL PATIENTS

must chart a new course  
to safely navigate a  
world with COVID-19.

#WCLLD22

Chronic  
Lymphocytic  
Leukemia

INFORMATION

EDUCATION

ACCESS

#getonboard #withteamCLL



Learning to navigate the world and live with COVID-19 is an uphill struggle for the immune-compromised.

**C**hronic  
**L**ymphocytic  
**L**eukemia

**CONSIDER US TO  
ENSURE WE CAN**

**GET ON  
BOARD!**



#getonboard  
#withteamCLL  
#WCLLD22

As we navigate our way around a world living with COVID-19, ensure the immune-compromised aren't left behind.

**C**hronic  
**L**ymphocytic  
**L**eukemia

TICKET TO **NORMAL  
LIFE**

**GET  
ON  
BOARD!**

**#WCLLD22** **#getonboard** **#withteamCLL**



# CLL

## MYTH BUSTER

- Despite being considered a rare disease, **CLL is the most common leukemia.**
- Often called a disease of old men, **CLL can affect everyone**, regardless of age or gender.

#WCLLD22

#getonboard

#withteamCLL

**C**hronic  
**L**ymphocytic  
**L**eukemia

CLL is often referred  
to as the 'Good' cancer.  
All CLL patients  
rightfully hate that  
description.

**NO CANCER IS GOOD.**

**C**hronic  
**L**ymphocytic  
**L**eukemia

**#WCLLD22**

**#getonboard #withteamCLL**

A stylized graphic of an umbrella with a yellow handle and a blue shaft. The canopy is divided into four colored segments: red, yellow, pink, and orange. The background is split into a pink upper-left section and a blue upper-right section, with a teal wavy line at the bottom.

**CLL**  
**MYTH BUSTER**



# CLL

## MYTH BUSTER



- Although CLL most commonly affects men over 50, and that men are diagnosed twice as often as women, **we are seeing more and more young and female patients.**
- It is **not an 'old man's disease'.**

#WCLLD22

#getonboard

#withteamCLL

**C**hronic  
**L**ymphocytic  
**L**eukemia

# Did you know?

**C**hronic  
**L**ymphocytic  
**L**eukemia

- CLL patients are immune-compromised, so they do not get the same benefit from vaccination as the healthy population.
- Other protections (e.g. face masks & distancing) are the best chance for protecting CLL patients.

## GET ON BOARD!



#getonboard #withteamCLL

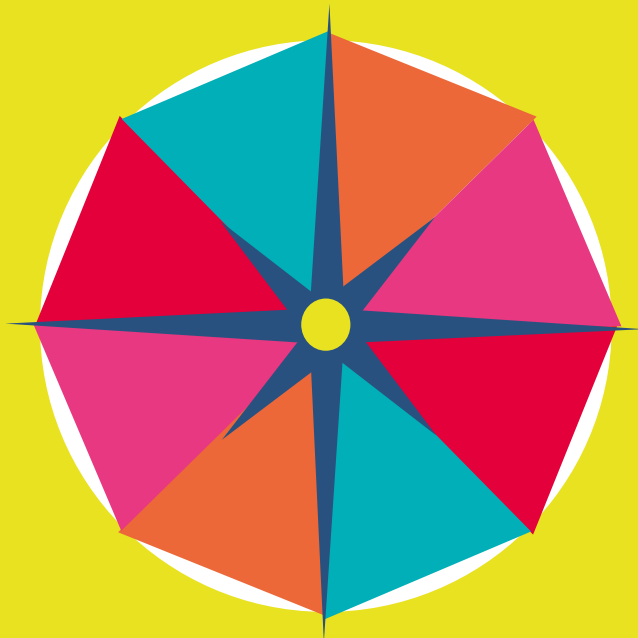
#WCLLD22

# World CLL Day

## GET ON BOARD



**C**hronic  
**L**ymphocytic  
**L**eukemia



# CLL

## PATIENTS

must chart a new course  
to safely navigate a  
world with COVID-19.

### How can you help the CLL Community



Measures including social distancing,  
mask wearing and new drug treatments  
are the best chance for protecting CLL patients.

#WCLLD22

#getonboard #withteamCLL

**Each patient is  
different ...  
and so is their CLL.  
Every CLL patient  
has their own story.**

**Why not share yours?**

**C**hronic  
**L**ymphocytic  
**L**eukemia



**#getonboard  
#withteamCLL**

**#WCLLD22**



# World CLL Day

## GET ON BOARD



**C**hronic  
**L**ymphocytic  
**L**eukemia

### The facts

CLL is the

**MOST  
COMMON**

**LEUKEMIA**

accounting for



of all  
leukemia  
cases

yet, it's classed as a

**RARE**

**CANCER**

#getonboard #withteamCLL

#WCLLD22

# World CLL Day

## GET ON BOARD



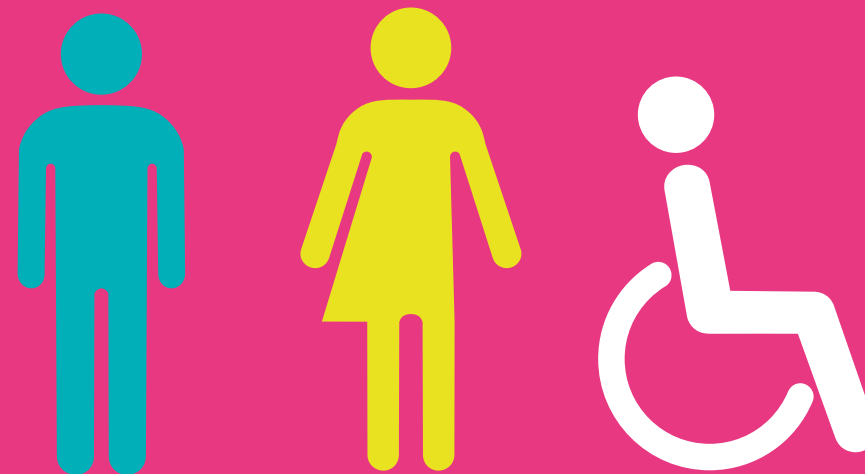
**C**hronic  
**L**ymphocytic  
**L**eukemia

### Who is affected



**CLL MOST COMMONLY AFFECTS MEN OVER 50.**  
Men are diagnosed twice as often as women.

**Yet, CLL CAN affect any adult, regardless of age or gender ...**



**with** increasing numbers of younger & female patients.



**CLL is a chronic condition and not usually curable**

**#getonboard #withteamCLL**

**#WCLLD22**

**MORE**  
**PROTECTION**



**LESS**  
**INFECTION**

We know you  
are tired of  
masks ... **but**  
**they are still**  
**important to us!**

**C**hronic  
**L**ymphocytic  
**L**eukemia

**#WCLLD22**

**#getonboard #withteamCLL**

# Thank you

for **protecting**  
**our community**  
by continuing to  
wear a mask.

**C**hronic  
**L**ymphocytic  
**L**eukemia

**#WCLLD22**

**#getonboard #withteamCLL**

# MORE PROTECTION



# LESS INFECTION

**C**hronic  
**L**ymphocytic  
**L**eukemia

**Today, on World CLL Day,  
we reflect on the themes of  
protecting ourselves  
& protecting others.**

**Take a picture with your  
umbrella to get on board with our  
community and show your support!**

**#meand  
myumbrella**

**#getonboard #withteamCLL**

**#WCLLD22**

# WE'RE ON BOARD!



WITH THE WHOLE  
COMMUNITY!



**C**hronic  
**L**ymphocytic  
**L**eukemia

#WCLLD22

#getonboard #withteamCLL




**C**hronic  
**L**ymphocytic  
**L**eukemia

**#WCLLD22**

**#getonboard #withteamCLL**

**C**hronic  
**L**ymphocytic  
**L**eukemia



**#meand  
myumbrella**

**#getonboard #withteamCLL**