

World CLL Day



SUPPORT | INFORMATION | CONNECTION



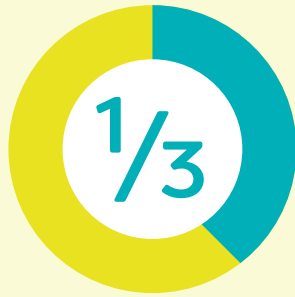
CLL, or Chronic Lymphocytic Leukemia, is a type of cancer that affects the white blood cells.

The facts

CLL is the



accounting for



of all leukemia cases

yet, despite this, it's classed as a

RARE CANCER



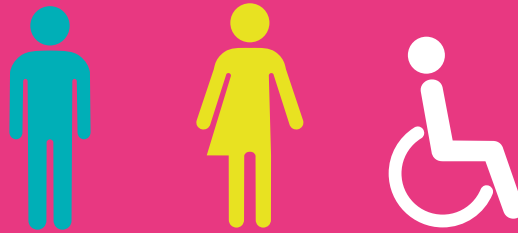
Who is affected



50+

CLL MOST COMMONLY AFFECTS MEN OVER 50. Men are diagnosed twice as often as women.

Yet, CLL CAN affect any adult, regardless of age or gender ...



with increasing numbers of younger & female patients.



CLL is a chronic condition and not usually curable

Health equality for all CLL patients

LET'S LEVEL UP



Health disparities between low and middle income countries



Treatment and care inequalities geographically



Access to supportive care & emotional well-being support



Health literacy awareness for better decision making



#WCLLD24 #LetsLevelUp #CLL

Find out more at wclld.org

Chronic
Lymphocytic
Leukemia

World CLL Day

Let's 
Level up

SUPPORT | INFORMATION | CONNECTION

CLL, or Chronic Lymphocytic Leukemia, is a type of cancer that affects the white blood cells.

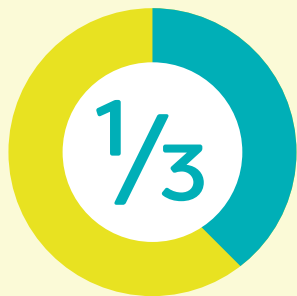


The facts

CLL is the



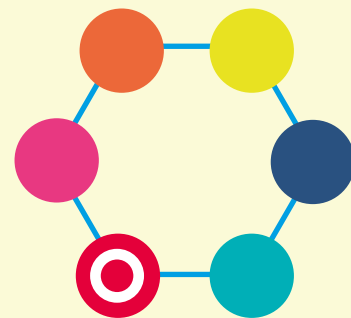
accounting for



of all leukemia cases

yet, despite this, it's classed as a

RARE
CANCER



Who is affected



50+

CLL MOST COMMONLY AFFECTS MEN OVER 50. Men are diagnosed twice as often as women.

Yet, CLL CAN affect any adult, regardless of age or gender ...



with increasing numbers of younger & female patients.



CLL is a **chronic condition** and **not usually curable**

Health equality for all CLL patients

LET'S LEVEL UP

Health disparities between low and middle income countries

Treatment and care inequalities geographically

Access to supportive care & emotional well-being support

Health literacy awareness for better decision making



Chronic
Lymphocytic
Leukemia

#WCLLD24 #LetsLevelUp #CLL

Find out more at wclld.org